

# NACRE

## SOOTHING SHADES

### Application

Prepare your walls with the **Primer** before paint.

1

**Pearly effect:** Apply a thin coat of **Nacre** with a roller. Leave to dry  $\pm 4h$ .

2

Apply directly a second coat of **Nacre** with the **Spatola** or **Stainless steel float**, in a wavelike motion in all directions to bring out the shimmers of pearl.

#### On panelling:

Apply **Nacre** with a **Spalter** in the grain direction. Well smooth to avoid over-thicknesses. Allow to dry  $\pm 2h$ .

Apply a second coat if necessary on your surface previously lightly sanded.

#### Beaded pearl effect:

To get a beaded pearl effect, add a can of **Silk beads** in the can of **Nacre**. Mix well and apply 2 thin coats using a **Spalter** in irregular crisscross movements. Allow to dry  $\pm 4$  hours between coats.

LET'S PAINT !

*\*Adding beads into paint will not change its coverage.*



## PEARLY VELVET PAINT

IDEAL IN BATHROOMS  
WASHABLE - HIGHLY RESISTANT  
HIGH COVERAGE: 2L = 12m<sup>2</sup>  
WALL - WOODWORK

*NACRE, products and associated tools*



STAINLESS STEEL  
SPATULA



DRYING



CLEANING  
WITH WATER

*Join the Creative Revolution !*

id-paris.com -   

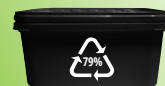


MADE IN FRANCE



Charente  
Maritime

RECYCLED PACKAGING



VOC <1g/L

INITIATIVES DÉCORATION  
BP30027 - 17301 Rochefort France  
+33 5 46 88 88 00 - [id-paris.com](http://id-paris.com)



Photo Margine LE GUEN - Colours Vanille



Fabrication et Art de vivre à la française

RÉVOLUTION  
CRÉATIVE

id

# NACRE

WALL • WOODWORK





Macaron



Colours



Macaron



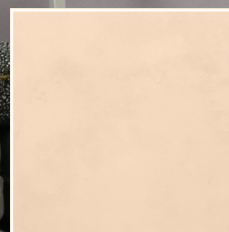
Meringue



Anis



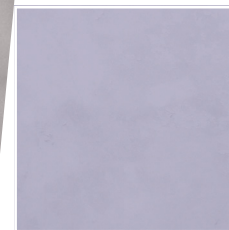
Sorbet



Vanille



Pistache



Cassis



Noisette

# #CREATIVE REVOLUTION

Assert your style  
with

## NACRE



These colours should only be used as an indication. Due to printing process limitations exact colour reproduction is impossible.